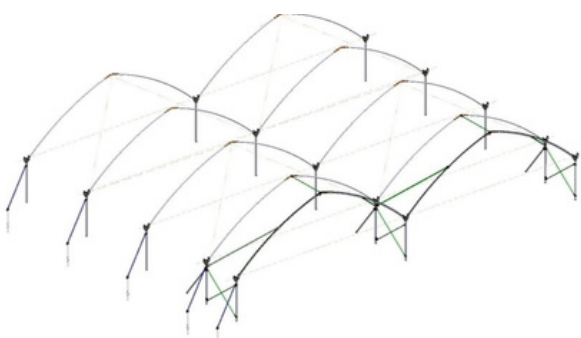


== HIGH TUNNEL SYSTEM ==



MACRO TUNNEL 2.0

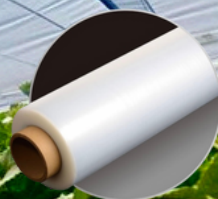
Perspective view without film covering



A stronger, more durable macro tunnel solution built to grow with your operation. Designed for high-value crops. Macro Tunnel 2.0 delivers reliable protection today while offering the flexibility to transition into a full greenhouse system.



Plastic Film Cover

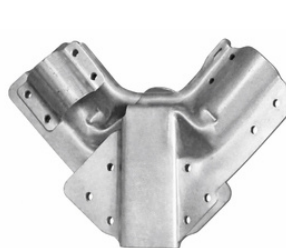


== HIGH TUNNEL SYSTEM ==

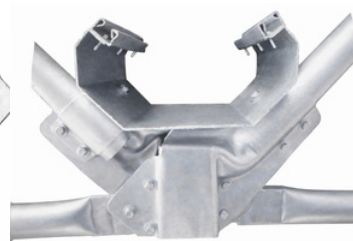


TECHNICAL SPECIFICATIONS

- ✓ **WIDTH OF TUNNEL 25' & 27' (CUSTOMIZABLE)**
- ✓ **CENTER HEIGHT 11'- 13'**
- ✓ **POST SPACING 5'-8' ON CENTER**
- ✓ **HIGH-QUALITY GALVANIZED STEEL**
- ✓ **OPT. CONVERT TO GUTTER GREENHOUSE**
- ✓ **SPECIAL PLASTIC FILM (COOLING OR HEATING)**



STANDARD HORN



GUTTER CONNECT

Galvanized Steel

✓ **STEEL G90 & HOT DIP**

